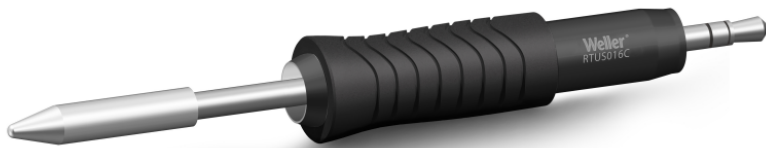


RTUS 016 C MS

Product no.: T0050112399



Benefits

- For all heavy duty application with larger component sizes: Smart high performance active tips for heavy duty and largest components: from 1612 (Component Size XL to XXL)
- Extremely Fast 7-Second Heat-Up Time for Heavy-Duty Applications
- Thermal Core Technology Provides High Power at the Tip Point
- Maximum Precision: Short tip-to-grip distance and optimized shape provides maximum precision during the soldering process.
- Clear Identification Smart Tips
- Full Process Control with Tip Lock Function
- Full Traceability with Tip ID Number and Integrated Data Storage
- Accurate Data Results with Tip-Offset Function
- Fast, Safe and Easy Tip Exchange
- Maximum Protection: (IPC industry standards - TM-650 2.5.33)

**Technical Data**

Tip shape	Conical
Tip type	MS
Width in mm	1.6
Width in inches	0.063
Thickness in mm	---
Thickness in inches	---
Length mm	27.5
Length inches	1.083
Power	---
Packaging unit	1